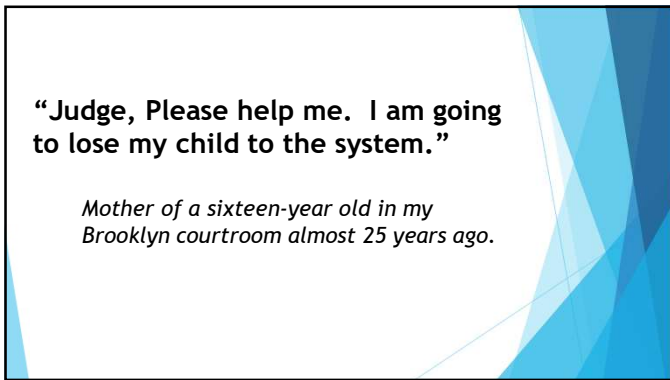
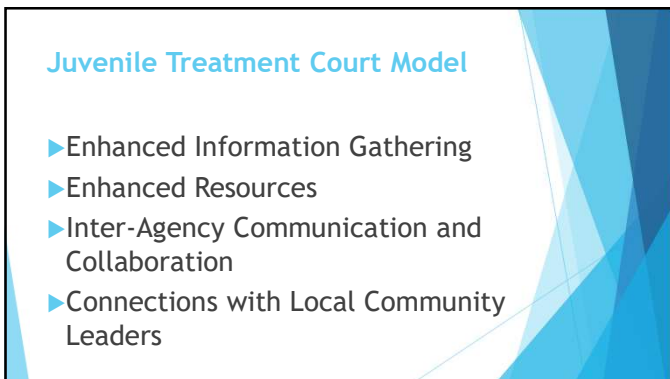


1



2



3

Phases

- ▶ 1. The Assessment Phase—"Why are you here kid?"
 - ▶ Enhanced Information Gathering
 - ▶ Initial screening for eligibility and need for immediate services
 - ▶ Thorough bio-psycho-social assessment including interviews with the youth, family members, friends, teachers and anyone else with relevant information
- ▶ 2. Support and Services Phase—"Let us help you kid."
 - ▶ Enhanced Resources - Multidisciplinary planning and case management
- ▶ 3. The Compliance Phase—"How are you doing, kid?"
 - ▶ Regular Court Appearances
 - ▶ Inter-Agency Collaboration
 - ▶ All service providers will have submitted detailed compliance updates
- ▶ 4. The After-Care Phase—"We are still here for you kid."
 - ▶ Connecting with Community Leaders

4

Phase 1-Assessment
"Why Are You Here Kid?"

- ▶ Five Factors Commonly Associated with Court-Involved Youth & Young Adults
 - ▶ Homelessness and Family Environment
 - ▶ Substance Abuse
 - ▶ Mental Health
 - ▶ Education
 - ▶ Gangs

5

Homelessness and Family Environment

- ▶ *Homeless Youth*—Living in stolen cars, friend's couches, and abandoned buildings.
- ▶ *Family Environment*—Includes **family conflict**, poor discipline, parental rejection, lack of supervision or family rituals, poor family management and communication, sexual and physical abuse, use of alcohol, tobacco and other drugs by parents or siblings. *
- ▶ *Runners*

*Dr. Norman Miller, "Principles of Addiction and the Law."

6

Substance Use Disorders

▶ Trauma and addiction are often linked to each other. Addiction frequently occurs as a result of trauma and related mental health disorders associated with trauma. Ample evidence has shown that childhood trauma compromises neural structure and function, rendering an individual susceptible to substance abuse. *

*Lamya Khoury, Yilang L.Tang, Bekh Bradley, Joe F Cubells & Kerry J Ressler, "Substance Use, Childhood Traumatic Experience, and Posttraumatic Stress Disorder."

7

Mental Health

▶ In 2018, the Bureau of Justice Statistics (BJS) reported that 26% of prisoners in local jails met the criteria for having serious mental health conditions. Only five percent of the general population meets those criteria, according to the BJS.

8

Education

- ▶ Truancy
- ▶ Undiagnosed Learning Disabilities
- ▶ Behavioral Issues

9

Gangs

According to the American Academy of Child and Adolescent Psychiatry some children and adolescents are motivated to join a gang for a sense of connection or to define a new sense of who they are. Others are motivated because a family member also is in a gang.

10

Insert Sherriff Video Here

11

Phase 2-Support and Services *"Let us Help You Kid."*

- ▶ Enhanced Resources
 - ▶ Clinical Team Meetings- Creating Multi-disciplinary "Dream Team"
 - ▶ Accountability - Identifying the Most Qualified and Successful Service Providers
 - ▶ Safe Spaces Program

12

Phase 3-Compliance
"How Are You Doing Kid?"

- ▶ Interagency Collaboration and Communication
 - ▶ Court Staff, DSS, OCFS, CPS, OMH, Probation, County Attorneys, AFC's, and School Districts create a **Network of Oversight and Support**

13

Phase 4-Aftercare
"We Are Still Here For You Kid."

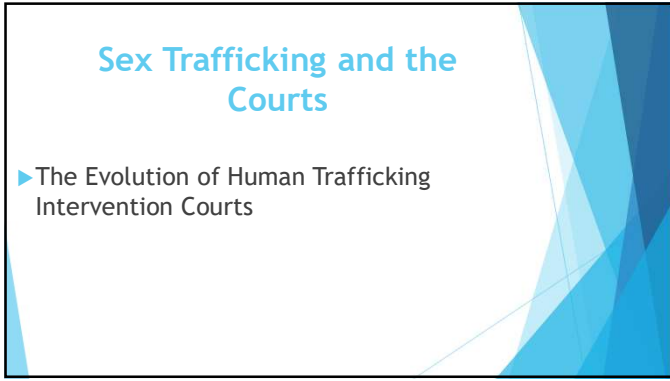
- ▶ Connecting with Local Community Leaders
- ▶ Terry Smith Resource Center

14

ConceptS Court Treatment Model:
Terry Smith

- ▶ Enhanced Information Gathering
- ▶ Enhanced Resources
- ▶ Interagency Communication and Collaboration
- ▶ Connecting with Local Community Leaders

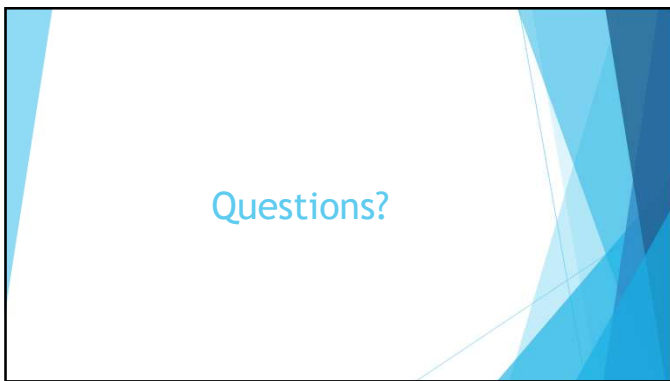
15



16



17



18
